

MONTHLY MEMBERSHIP PROGRESS REPORT

LOCATION NEW JERSEY

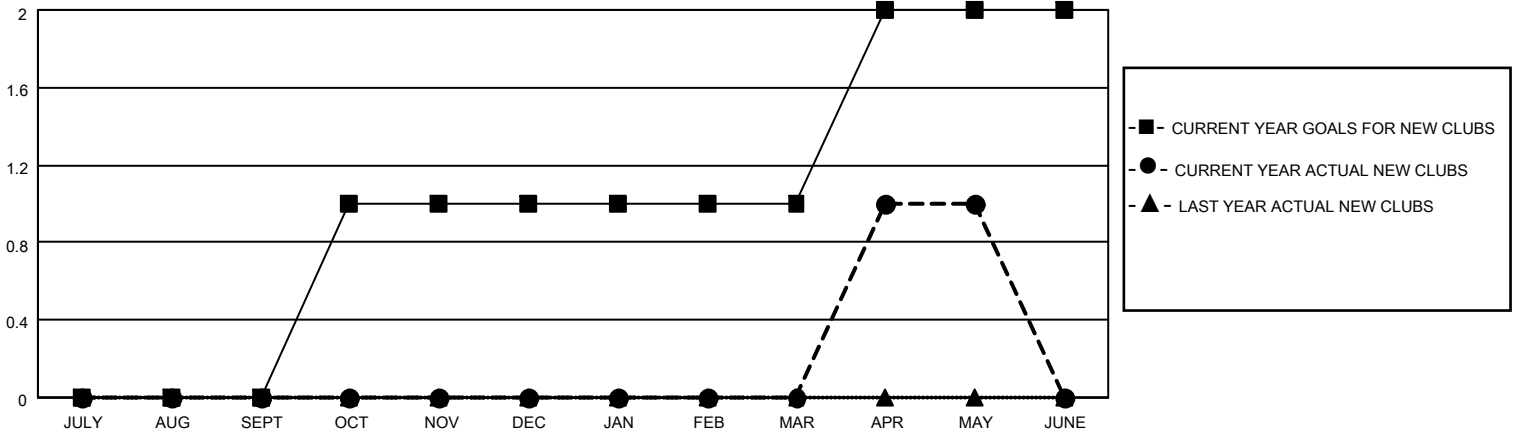
District 16 N

Results as of: 5/31/2022

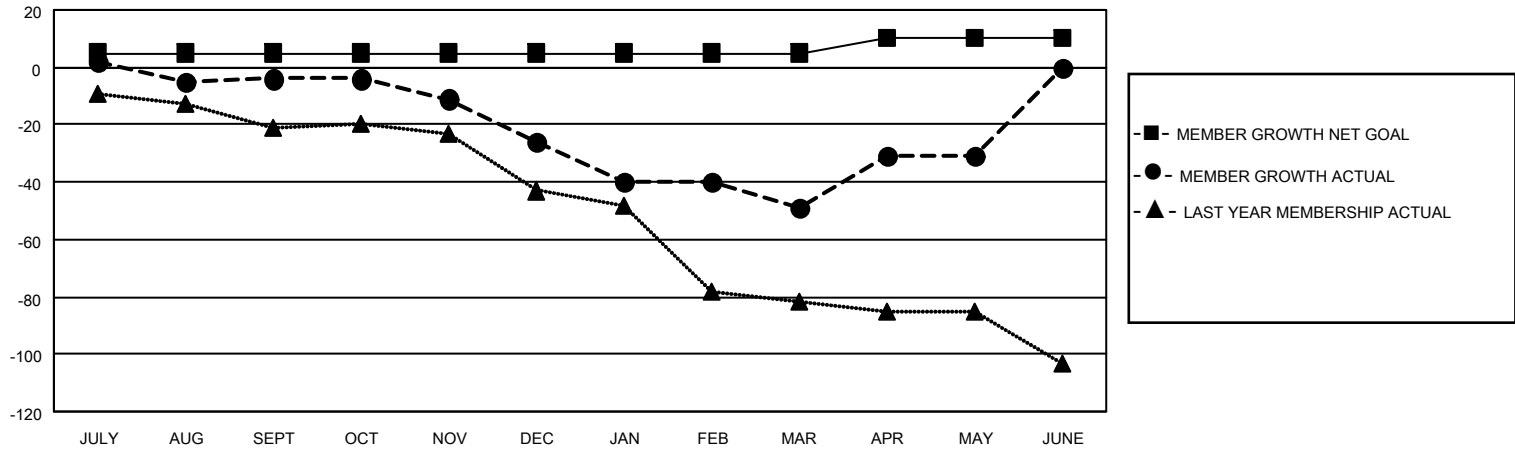
Clubs			
RESULTS FOR 2021-2022			
QUARTER	NEW CLUB GOAL	NEW CLUBS	DROPPED CLUBS
JULY/AUG/SEPT	0	0	0
OCT/NOV/DEC	1	0	1
JAN/FEB/MAR	0	0	0
APR/MAY/JUNE	1	1	0

Members			
RESULTS FOR 2021-2022			
QUARTER	MEMBER GROWTH NET GOAL	MEMBER GROWTH ACTUAL	DROPPED MEMBERS ACTUAL (including transfers)
JULY/AUG/SEPT	5	14	16
OCT/NOV/DEC	0	15	37
JAN/FEB/MAR	0	16	38
APR/MAY/JUNE	5	34	15

GOALS AND ACTUAL NEW CLUBS CUMULATIVE



GOALS AND ACTUAL MEMBERS CUMULATIVE



DROPPED CLUBS: 1	
DROPPED MEMBERS	
DECEASED	13
CLUB CANCELLED	9
OTHER	84
TOTAL	106

21 CLUBS OF 58 ADDED 1 OR MORE NEW MEMBERS

[CLICK HERE FOR CUMULATIVE MEMBERSHIP DATA](#)

<u>GENDER DISTRIBUTION</u>	
MALE	860 (70.15%)
FEMALE	365 (29.77%)
NON BINARY	0 (0.00%)
PREFER NOT TO ANSWER	1 (0.08%)
TOTAL FAMILY UNIT MEMBERS	204
FAMILY MEMBERS PAYING HALF DUES	106